

MONTHLY MEMBERSHIP PROGRESS REPORT

District 11 D2

Results as of: 3/31/2025

GMT:

LOCATION MICHIGAN

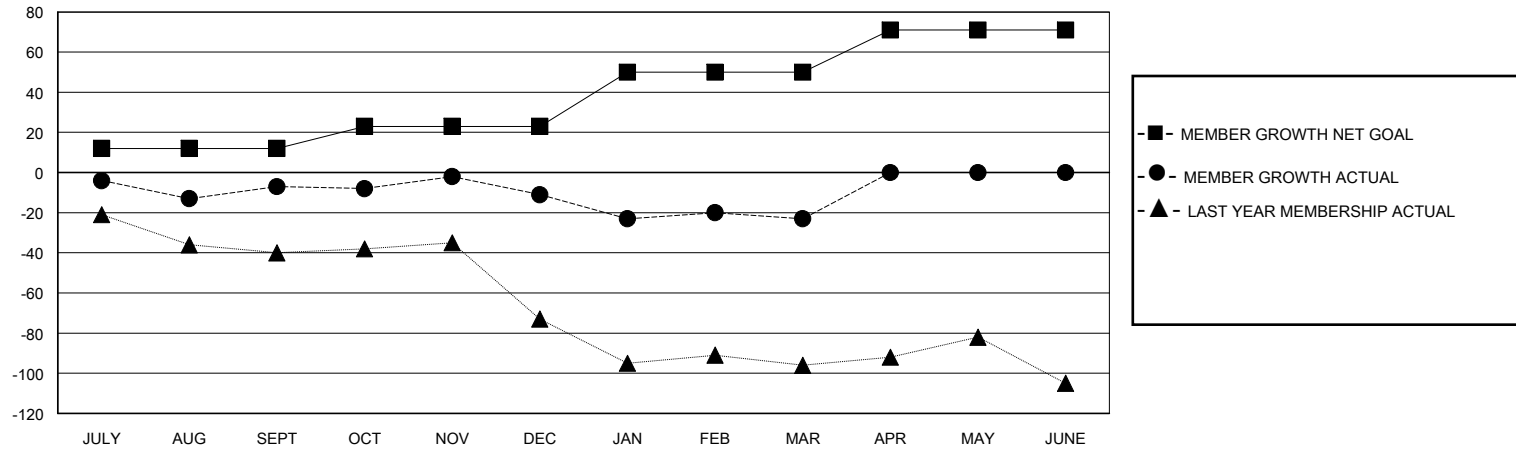
GMT CA

Clubs				Members			
RESULTS FOR 2024-2025				RESULTS FOR 2024-2025			
QUARTER	NEW CLUB GOAL	NEW CLUBS	DROPPED CLUBS	QUARTER	MEMBER GROWTH NET GOAL	MEMBER GROWTH ACTUAL	DROPPED MEMBERS ACTUAL (including transfers)
JULY/AUG/SEPT	0	0	0	JULY/AUG/SEPT	12	19	24
OCT/NOV/DEC	1	0	0	OCT/NOV/DEC	11	19	23
JAN/FEB/MAR	0	0	0	JAN/FEB/MAR	27	34	40
APR/MAY/JUNE	0	0	0	APR/MAY/JUNE	21	0	0

GOALS AND ACTUAL NEW CLUBS CUMULATIVE



GOALS AND ACTUAL MEMBERS CUMULATIVE



DROPPED CLUBS: 0	25 CLUBS OF 45 ADDED 1 OR MORE NEW MEMBERS	GENDER DISTRIBUTION	
		MALE	849 (71.34%)
		FEMALE	340 (28.57%)
DROPPED MEMBERS	<a href="#">CLICK HERE FOR CUMULATIVE MEMBERSHIP DATA</a>	TOTAL FAMILY UNIT MEMBERS	
DECEASED			0
CLUB CANCELLED		FAMILY MEMBERS PAYING HALF DUES	
OTHER			0
TOTAL			